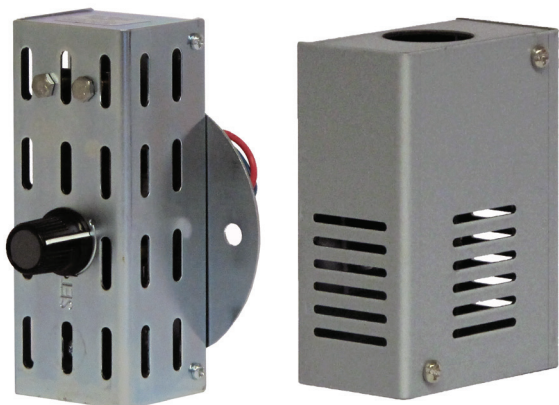


## Thermal Fusible Links



### | Overview |

The Flamefast range of Fusible Thermal Links are to be installed directly above boiler plant and are designed to detect excessive heat, and when interfaced with a Flamefast BoilerGuard (or third party safety circuit) can be used to isolate the fuel supply to the plant.

All fuses have an activation point of 72°C with resettable and non-resettable types available.

### Technical Specification

Output Type	Volt Free Contact
Contact Rating	230VAC 5A Max
Activation Point	72°C (162°F)
Mounting Height	0.3 to 1.0m above plant
Mounting Type	
Resettable	Standard Circular Conduit Box
Non-resettable	M20 conduit entry

### Part Numbers & Options/Accessories

Part No	Description
TFUSE	Resettable Fusible Thermal Link (72°C)
TFL72	Non-resettable Fusible Thermal Link (72°C)
TFL72-RF	TFL72 Replacement Fuse (72°C)

## Remote Emergency Stop Button



### | Overview |

Our twist release Remote Emergency Stop Buttons can be easily interfaced with any GasGuard, for when there is more than one emergency exit from an area.

### Dimensions

Height	68 mm
Width	68 mm
Depth	85 mm

### Technical Specification

Output Type	Volt Free Contact
IP Rating	IP65
Contact Rating	230VAC 5A Max

### Part Numbers & Options/Accessories

Part No	Description
RSTOP	Remote Emergency Stop – Twist Release